

^MMeat
^GGear



CATALOG
2023



MEAT CUTTING BAND SAW MACHINE MODEL 295

ID	DESCRIPTION
SIE295AI15HP1P	MEAT CUTTING BAND SAW MACHINE MODEL 295 (116"), 1.5 HP, 1P, SS
SIE295AI3HP3P	MEAT CUTTING BAND SAW MACHINE MODEL 295 (116"), 3 HP, 3P, SS
SIE295AI3HP1P	MEAT CUTTING BAND SAW MACHINE MODEL 295 (116"), 3 HP, 1P, SS
SIE295AI5HP3P	MEAT CUTTING BAND SAW MACHINE MODEL 295 (116"), 5 HP, 3P, SS

295 (NOT PLUS) Stainless Steel

Motor 1.5 hp, 3hp or 5hp

- Durable and trustworthy, perfect for the style of cut and use of the Cutting Band Saw Machine.
- **Not Hose Down washable.**

Transmission System

- Traction Band

Security characteristics

- Upper and Lower Pulley completely sealed
- Security adjustable Protective Guard

Automatic Tension

- Easy use, more productive
- Always get the right and constant tension.
- Simple click does the trick
- Automatically adjusts band with Pulleys and Guides.

Control System

- Easy Use
- Start and Stop Buttons.
- Robust Design made in Stainless Steel.
- Contact with food made of Stainless Steel.

Details

- Motor: 1.5hp monophasic, with option of 3hp and 5 hp triphasic 127 or 220v
- Interrupter with emergency stop.
- Band Saw 116", automatic tension
- Cutting capacity (13 7/8" width, 17" height, 21" long)
- Weight 400 pounds
- Band velocity 16 mts/ second

Pulley Design

- Durable and reliable
- Correctly Balanced
- Angle in Pulley gets Band in correct position.

Sliding Table

- 16.75" width X 20.5" long, Stainless Steel
- Plastic injected wheels

Gauge Plate

- 7" x 16.5" Stainless Steel
- Adjustable cutting size
- Stackable design

Table Assembly base

- 17.75" x 37" Stainless Steel
- Thickness makes for resistant surface
- Enough space to stack product

MEAT CUTTING BAND SAW MACHINE 295 PLUS MODEL

ID	DESCRIPTION
SIE295AIHER15HP1P	MEAT CUTTING BAND SAW MACHINE MODEL 295 PLUS (116"), 1.5 HP, 1P, SS
SIE295AIHER3HP3P	MEAT CUTTING BAND SAW MACHINE MODEL 295 PLUS (116"), 3 HP, 3P, SS
SIE295AIHER3HP1P	MEAT CUTTING BAND SAW MACHINE MODEL 295 PLUS (116"), 3 HP, 1P, SS
SIE295AIHER5HP3P	MEAT CUTTING BAND SAW MACHINE MODEL 295 PLUS (116"), 5 HP, 3P, SS

MEAT CUTTING BAND SAW MACHINE 305 PLUS MODEL

ID	DESCRIPTION
SIE305AIHER15HP1P	MEAT CUTTING BAND SAW MACHINE MODEL 305 PLUS (120"), 1.5 HP, 1P, SS
SIE305AIHER3HP3P	MEAT CUTTING BAND SAW MACHINE MODEL 305 PLUS (120"), 3 HP, 3P, SS
SIE305AIHER3HP1P	MEAT CUTTING BAND SAW MACHINE MODEL 305 PLUS(120"), 3 HP, 1P, SS
SIE305AIHER5HP3P	MEAT CUTTING BAND SAW MACHINE MODEL 305 PLUS(120"), 5 HP, 3P, SS



SIE295AI-

295 and 320 (PLUS) Stainless Steel

- Motor 1.5 hp, 3hp or 5hp
- Durable and trustworthy, perfect for the style of cut and use of the Cutting Band Saw Machine.
 - Completely sealed
 - Thermomagnetic protection
 - **Hose Down Washable**

- Transmission System
- Traction Band

- Security characteristics
- Upper and Lower Pulley completely sealed, interlock switches.
 - Security adjustable
 - Protective Guard

- Automatic Tension
- Easy use, more productive
 - Always get the right and constant tension.
 - Simple click does the trick
 - Automatically adjusts band with Pulleys and Guides

- Control System
- Easy Use
 - Start and Stop Buttons.
 - Robust Design made in Stainless Steel, contact with food made of Stainless Steel.

- Details
- Motor: 1.5hp monophasic, with option of 3hp and 5 hp triphasic
 - 127 or 220v
 - Interrupter with emergency stop.
 - Band Saw 116"/120"
 - Cutting capacity (13 7/8" width, 17" height, 21" long)
 - Weight 400 pounds
 - Band velocity 16 mts/second
 - Completely made of Stainless Steel

- Pulley Design
- Durable and reliable
 - Tinned Steel
 - Correctly Balanced
 - Angle in Pulley gets Band in correct position

- Sliding Table
- 16.75" width X 20.5" long, Stainless Steel
 - Plastic injected wheels

- Gauge Plate
- 7" x 16.5" Stainless Steel
 - Adjustable cutting size
 - Stackable design

- Table Assembly base
- 17.75" x 37" Stainless Steel
 - Thickness makes for resistant surface
 - Enough space to stack product

Difference between 116 and 120"

- Height of the neck, everything else is the same

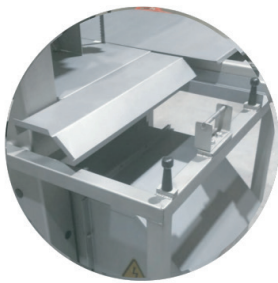


MEAT CUTTING BAND SAW MACHINE 142 MODEL	
ID	DESCRIPTION
SIE360AIHER3HP1P	MEAT CUTTING BAND SAW MACHINE MODEL 360 CM (142"), 3 HP, 1P, SS
SIE360AIHER3HP3P	MEAT CUTTING BAND SAW MACHINE MODEL 360 CM (142"), 3 HP, 3P, SS
SIE360AIHER5HP3P	MEAT CUTTING BAND SAW MACHINE MODEL 360 CM (142"), 5 HP, 3P, SS

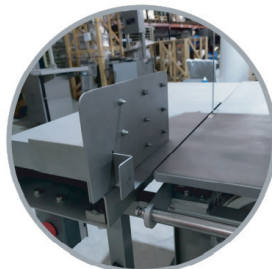
142 Stainless Steel

- 3hp or 5hp motor.
- Totally enclosed
- Removable double flanged pulleys
- Exclusive two-piece table and open frame
- Magnetic switch with thermal protection for voltage overloads
- Saw blade 142" long
- Capacity: cutting clearance is 15 3/4" D X 17 1/2" H X 24" L
- Weight: 566.5 LB
- Adjustable legs to adapt to floor irregularity
- Removable scrap tray
- Automatic tension, easy to use and tension
- Stationary cutting table (two piece): Provides extensive stacking space.
- Safety interlocked doors,
- Hinged and removable door, easy to clean up and maintenance.

Completely Hose- Down washable



Ramp for product drop



Product Pusher



MEAT CUTTING BAND SAW MACHINE 126 MODEL

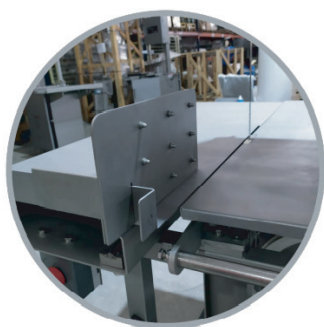
ID	DESCRIPTION
SIE320AIHER5HP3P	MEAT CUTTING BAND SAW MACHINE MODEL 320 (126"), 5 HP, 3P, SS
SIE320AIHER3HP3P	MEAT CUTTING BAND SAW MACHINE MODEL 320 (126"), 3 HP, 3P, SS
SIE320AIHER3HP1P	MEAT CUTTING BAND SAW MACHINE MODEL 320 (126"), 3 HP, 1P, SS

126 Stainless Steel

Triphasic 5hp.
 3 Hp or 5hp motor (line), optional 1.5 HP and 3 HP.
 Hose washable.
 ON-OFF Switch, with Emergency Stop.
 Blade tension control accessible and automatic.
 Cutting Band Saw 126".
 Cutting capacity 13 3/4" width X 20" height X 20 1/2" length.
 Speed 16 mts./sec.

- Adjustable legs to adapt to floor irregularity
- Removable scrap tray
- Automatic tension, easy to adjust by hand
- Stationary cutting table (two piece): Provides extensive stacking space.
- Safety interlocked doors,
- Hinged and removable door, easy to clean up and maintenance.

Completely Hose- Down washable



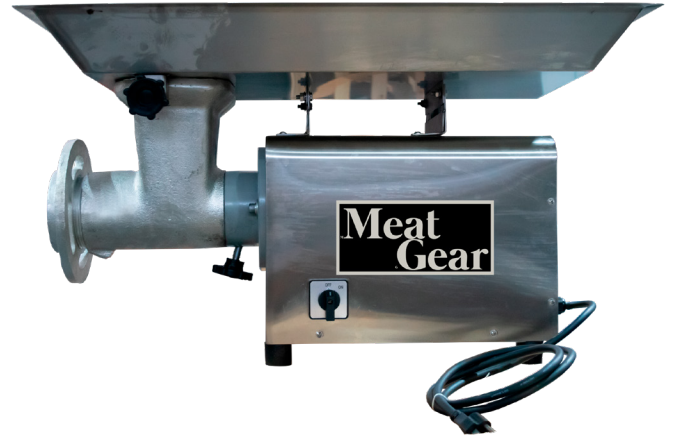
Product Pusher

MEAT GRINDER MODEL 22

ID	DESCRIPTION
MO22AC2HP1101P	MEAT GRINDER, M22, 110 VOLTS, 2 HP, 1P, CAST IRON
MO22AC2HP2201P	MEAT GRINDER, M22, 220 VOLTS, 2 HP, 1P, CAST IRON
MO22AI2HP1101P	MEAT GRINDER, M22, 110 VOLTS, 2 HP, 1P, STAINLESS STEEL
MO22AI2HP2201P	MEAT GRINDER, M22, 220 VOLTS, 2 HP, 1P, STAINLESS STEEL
MO22AC1HP1101P	MEAT GRINDER, M22, 110 VOLTS, 1 HP, 1P, CAST IRON
MO22AC1HP2201P	MEAT GRINDER, M22, 220 VOLTS, 1 HP, 1P, CAST IRON
MO22AI1HP1101P	MEAT GRINDER, M22, 110 VOLTS, 1 HP, 1P, STAINLESS STEEL
MO22AI1HP2201P	MEAT GRINDER, M22, 220 VOLTS, 1 HP, 1P, STAINLESS STEEL

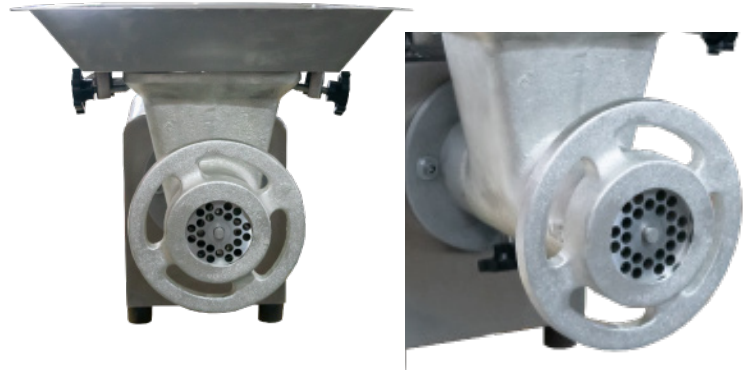
MEAT GRINDER MODEL 32

ID	DESCRIPTION
MO32AC3HP2201P	MEAT GRINDER, M32, 220 VOLTS, 3 HP, 1P, CAST IRON
MO32AC3HP2203P	MEAT GRINDER, M32, 220 VOLTS, 3 HP, 3P, CAST IRON
MO32AC5HP2203P	MEAT GRINDER, M32, 220 VOLTS, 5 HP, 3P, CAST IRON
PEDESTAL	PEDESTAL FOR MEAT GRINDER M 32



MEAT GRINDER M22 STAINLESS STEEL OR CAST IRON

- Model 22
- Stainless Steel Cabinet and Pan
- Head Stock Ring, Worm and Head Stock
- Stainless Steel or Cast iron
- 110 or 220 v
- 30.5"x 16 13/16" x 3" Pan
- Motor 1hp or 2 hp
- Up to 1700 pounds per hour



MEAT GRINDER M32 STAINLESS STEEL OR CAST IRON

- Model 32
- Stainless Steel Cabinet and Pan
- Head Stock Ring, Worm and Head Stock
- Stainless Steel or Cast Iron
- 40 11/16" X 26 5/16" X 8 1/2" pan
- 220 volts
- 1F or 3F
- Motor 3 HP
- Up to 3300 pounds per hour
- With or Without Pedestal



INDUSTRIAL FILM WRAPPERS

ID	DESCRIPTION
EMP18IM	INDUSTRIAL FILM WRAPPER 8" AND 18" ROLL, HEAT SEALER
EMP18IP	INDUSTRIAL FILM WRAPPER 8" AND 18" ROLL, HEAT SEALER WITH TABLE

EMP18IP INDUSTRIAL FILM WRAPPER WITH TABLE

Easy to control the film wrap adjustment to avoid waste and reduce cost.

Allows two sizes of film wrap working simultaneously

Safe to operate with its light indicator to prevent accidents

Provides bigger space to operate in with efficiency

Constructed in stainless steel/aluminium

Additional available accessories

- Left table BEPMI
- Right table BEPMD
- Labeling Scale BIE-30C



EMP18IM INDUSTRIAL FILM WRAPPER

Easy to control the film wrap adjustment to avoid waste and reduce cost.

Portable with hot sealing plate and controlled roll adjustment.

Constructed in stainless steel/aluminium

It's light indicator allows to know when its operating preventing accidents.





SAUSAGE STUFFER MANUAL MODEL

ID	DESCRIPTION
SAMIXM3	SAUSAGE STUFFER MANUAL MODEL 3 LTS
SAMIXM5	SAUSAGE MIXER MANUAL MODEL 5 LTS
SAMIXM7	SAUSAGE MIXER MANUAL MODEL 7 LTS

SAUSAGE STUFFER ELECTRIC MODEL

ID	DESCRIPTION
SAMIXELE10	SAUSAGE MIXER ELECTRIC MODEL 10 LTS
SAMIXELE15	SAUSAGE MIXER ELECTRIC MODEL 15 LTS

SAUSAGE MIXER MANUAL

Manufactured in Stainless Steel, vertical design. Includes 4 funnels 0.60", 0.86", 1.20", 1.50". It's engine system is made of gears, has capacity of 3, 5, 7 liters

SAUSAGE MIXER ELECTRIC

Manufactured in Stainless Steel, vertical design. Includes 4 funnels 0.60", 0.86", 1.20", 1.50". It's engine system is made of gears, has capacity of 10 and 15 liters
Voltage 110V





POULTRY CUTTER

ID	DESCRIPTION
ESP20AI110	POULTRY CUTTER 3/4HP STAINLESS STEEL 110V
ESP20AI220	POULTRY CUTTER 3/4HP STAINLESS STEEL 220V

POULTRY CUTTER

- Long lasting chrome steel blade.
- Precise cuts with a Stainless steel knife guide
- Easy to clean
- Easy to operate
- Sturdy construction
- Less maintenance
- High efficiency



POULTRY CUTTER

ID	ESP20AI110	ESP20AI220
Motor	3/4HP 373 WATTS	3/4HP 373 WATTS
Voltage	110 V	220 V
Electric power	7.2 Amp	4.1 Amp

MEAT GRINDER PLATE

ID	DESCRIPTION
BCD12P12	MEAT GRINDER PLATE #12, PERFORATED, 1/2", STAINLESS STEEL
BCD12P14	MEAT GRINDER PLATE #12, PERFORATED, 1/4", STAINLESS STEEL
BCD12P18	MEAT GRINDER PLATE #12, PERFORATED, 1/8", STAINLESS STEEL
BCD12P316	MEAT GRINDER PLATE #12, PERFORATED, 3/16", STAINLESS STEEL
BCD12P34	MEAT GRINDER PLATE #12, PERFORATED, 3/4", STAINLESS STEEL
BCD12P38	MEAT GRINDER PLATE #12, PERFORATED, 3/8", STAINLESS STEEL
BCD12P58	MEAT GRINDER PLATE #12, PERFORATED, 5/8", STAINLESS STEEL
BCD22P12	MEAT GRINDER PLATE #22, PERFORATED, 1/2", STAINLESS STEEL
BCD22P14	MEAT GRINDER PLATE #22, PERFORATED, 1/4", STAINLESS STEEL
BCD22P18	MEAT GRINDER PLATE #22, PERFORATED, 1/8", STAINLESS STEEL
BCD22P316	MEAT GRINDER PLATE #22, PERFORATED, 3/16", STAINLESS STEEL
BCD22P34	MEAT GRINDER PLATE #22, PERFORATED, 3/4", STAINLESS STEEL
BCD22P38	MEAT GRINDER PLATE #22, PERFORATED, 3/8", STAINLESS STEEL
BCD22P58	MEAT GRINDER PLATE #22, PERFORATED, 5/8", STAINLESS STEEL
BCD22PK3	MEAT GRINDER 22 LIVER (3) " STAINLESS STEEL
BCD32P1	MEAT GRINDER PLATE #32, PERFORATED, 1", STAINLESS STEEL
BCD32P12	MEAT GRINDER PLATE #32, PERFORATED, 1/2", STAINLESS STEEL
BCD32P14	MEAT GRINDER PLATE #32, PERFORATED, 1/4", STAINLESS STEEL
BCD32P18	MEAT GRINDER PLATE #32, PERFORATED, 1/8", STAINLESS STEEL
BCD32P316	MEAT GRINDER PLATE #32, PERFORATED, 3/16", STAINLESS STEEL
BCD32P34	MEAT GRINDER PLATE #32, PERFORATED, 3/4", STAINLESS STEEL
BCD32P38	MEAT GRINDER PLATE #32, PERFORATED, 3/8", STAINLESS STEEL
BCD32P58	MEAT GRINDER PLATE #32, PERFORATED, 5/8", STAINLESS STEEL



	THICKNESS	PERFORATIONS
GRINDER SIZE	12	8MM 1/8, 3/16, 1/4, 3/8, 1/2, 5/8, 3/4
	22	9MM 1/8, 3/16, 1/4, 3/8, 1/2, 5/8, 3/4, K
	32	12MM 1/8, 3/16, 1/4, 3/8, 1/2, 5/8, 3/4, 1



ITALIAN STYLE GRINDER KNIFE



GRINDER KNIFE



GRINDER STRAIGHT KNIFE

	KNIVES
GRINDER	12 ITALIAN STYLE GRINDER KNIFE GRINDER STRAIGHT KNIFE
	22 ITALIAN STYLE GRINDER KNIFE GRINDER STRAIGHT KNIFE
SIZE	32 GRINDER KNIFE GRINDER STRAIGHT KNIFE

GRINDER KNIVES

ID	DESCRIPTION
BN12	ITALIAN STYLE GRINDER KNIFE #12, STAINLESS STEEL
BNI22	ITALIAN STYLE GRINDER KNIFE #22, STAINLESS STEEL
BNLV12	GRINDER KNIFE #12, STAINLESS STEEL
BNLV22	GRINDER KNIFE #22, STAINLESS STEEL
BNLV32	GRINDER KNIFE #32, STAINLESS STEEL
BNIR12	GRINDER STRAIGHT KNIFE #12, STAINLESS STEEL
BNIR22	GRINDER STRAIGHT KNIFE #22, STAINLESS STEEL
BNIR32	GRINDER STRAIGHT KNIFE #32, STAINLESS STEEL



Cutting Band Saws

- Less waste
- Better Cuts
- High Quality

CUTTING BAND SAWS

ID	DESCRIPTION
BCB322L1	CUTTING BAND SAWS FROM 322-50" TO 322-116"
BCB322L2	CUTTING BAND SAWS FROM 322-117" TO 322-128"
BCB322L3	CUTTING BAND SAWS FROM 322-129" TO 322-150"

CUTTING BAND SAWS

ID	DESCRIPTION
BCB325L1	CUTTING BAND SAWS FROM 325-50" TO 325-116"
BCB325L2	CUTTING BAND SAWS FROM 325-117" TO 325-128"
BCB325L3	CUTTING BAND SAWS FROM 325-129" TO 325-150"

CUTTING BAND SAWS

ID	DESCRIPTION
BCB422L1	CUTTING BAND SAWS FROM 422-50" TO 422-116"
BCB422L2	CUTTING BAND SAWS FROM 422-117" TO 422-128"
BCB422L3	CUTTING BAND SAWS FROM 422-129" TO 422-150"

CUTTING BAND SAWS

ID	DESCRIPTION
BCB425L1	CUTTING BAND SAWS FROM 425-50" TO 425-116"
BCB425L2	CUTTING BAND SAWS FROM 425-117" TO 425-128"
BCB425L3	CUTTING BAND SAWS FROM 425-129" TO 425-150"

GENERAL FEATURES

THICKNESS	22 THOUSANDTHS	25 THOUSANDTHS
# TEETH PER INCH (TPI)	3 & 4 TEETH	
WIDTH	5/8 INCH (1.6 CM)	
SIZE	ANY REQUIRED	
CUT FEATURES	HIGH CUT DEMAND, LOW WASTE, HIGHLY RESISTANT, COMPETITIVE PRICE.	

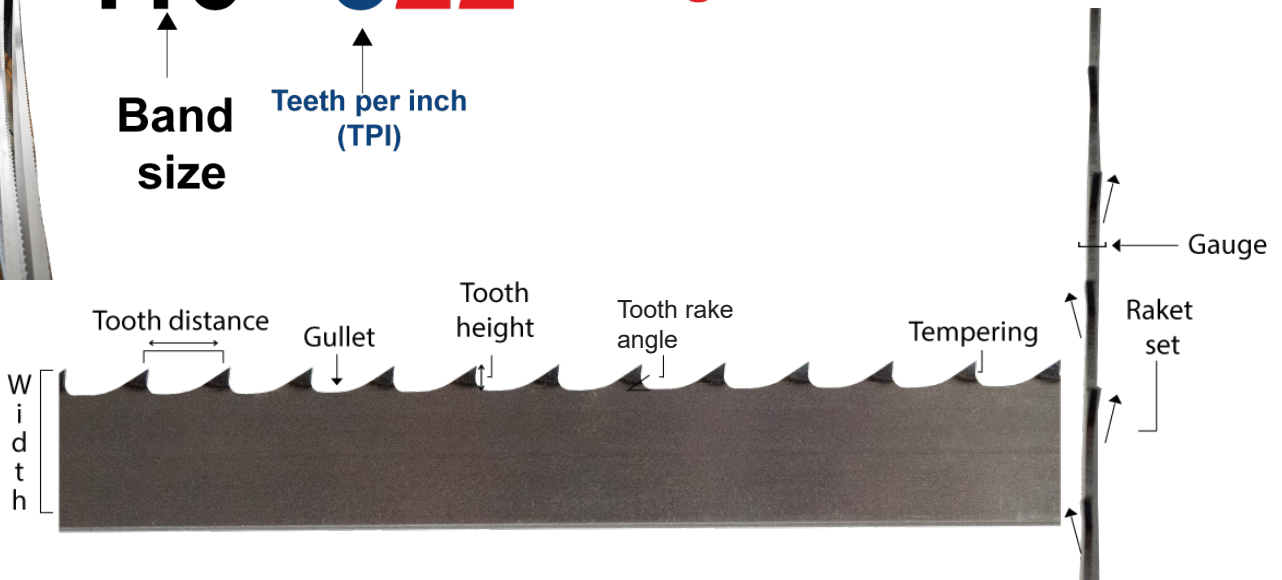


Nomenclature

116" - 322 ← Gauge

↑
Band size

↑
Teeth per inch (TPI)



^MMeat _GGear



MEATGEAR.MX



(800) 824-1644 / (832) 675-9699



sales@meatgear.mx