

<sup>M</sup>Meat  
<sup>G</sup>Gear

CATALOG



## MEAT CUTTING BAND SAW MACHINE 116" MODEL

ID	DESCRIPTION
SIE295AI15HP1P	MEAT CUTTING BAND SAW MACHINE MODEL 116", 1.5 HP, 1P, SS
SIE295AI3HP3P	MEAT CUTTING BAND SAW MACHINE MODEL 116", 3 HP, 3P, SS
SIE295AI3HP1P	MEAT CUTTING BAND SAW MACHINE MODEL 116", 3 HP, 1P, SS
SIE295AI5HP3P	MEAT CUTTING BAND SAW MACHINE MODEL 116", 5 HP, 3P, SS

### 116" (NOT PLUS) Stainless Steel

#### Motor 1.5 hp, 3hp or 5hp

- Durable and trustworthy, perfect for the style of cut and use of the Cutting Band Saw Machine.
- **Not Hose Down washable.**

#### Transmission System

- Traction Band.

#### Security characteristics

- Upper and Lower Pulley completely sealed.
- Security adjustable Protective Guard.

#### Automatic Tension

- Easy use, more productive.
- Always get the right and constant tension.
- Simple click does the trick.
- Automatically adjusts band with Pulleys and Guides.

#### Pulley Design

- Durable and reliable.
- Correctly Balanced.
- Angle in Pulley gets Band in correct position.

#### Sliding Table

- 16.75" width X 20.5" long, Stainless Steel.
- Plastic injected wheels.

#### Gauge Plate

- 7" x 16.5" Stainless Steel.
- Adjustable cutting size.
- Stackable design.

#### Table Assembly base

- 17.75" x 37" Stainless Steel.
- Thickness makes for resistant surface.
- Enough space to stack product.

#### Control System

- Easy Use.
- Start and Stop Buttons.
- Robust Design made in Stainless Steel.
- Contact with food made of Stainless Steel.

#### Details

- Motor: 1.5hp single phase, with option of 3hp and 5 hp three phase 127 or 220v.
- Interrupter with emergency stop.
- Band Saw 116", automatic tension.
- Cutting capacity (13 7/8" width, 17" height, 21" long).
- Weight 400 pounds.
- Band velocity 16 mts/ second.

## MEAT CUTTING BAND SAW MACHINE 116" PLUS MODEL

ID	DESCRIPTION
SIE295AIIHER15HP1P	MEAT CUTTING BAND SAW MACHINE MODEL 116" PLUS, 1.5 HP, 1P, SS
SIE295AIIHER3HP3P	MEAT CUTTING BAND SAW MACHINE MODEL 116" PLUS, 3 HP, 3P, SS
SIE295AIIHER3HP1P	MEAT CUTTING BAND SAW MACHINE MODEL 116" PLUS, 3 HP, 1P, SS
SIE295AIIHER5HP3P	MEAT CUTTING BAND SAW MACHINE MODEL 116" PLUS, 5 HP, 3P, SS

## MEAT CUTTING BAND SAW MACHINE 120" PLUS MODEL

ID	DESCRIPTION
SIE305AIIHER15HP1P	MEAT CUTTING BAND SAW MACHINE MODEL 120" PLUS, 1.5 HP, 1P, SS
SIE305AIIHER3HP3P	MEAT CUTTING BAND SAW MACHINE MODEL 120" PLUS, 3 HP, 3P, SS
SIE305AIIHER3HP1P	MEAT CUTTING BAND SAW MACHINE MODEL 120" PLUS, 3 HP, 1P, SS
SIE305AIIHER5HP3P	MEAT CUTTING BAND SAW MACHINE MODEL 120" PLUS, 5 HP, 3P, SS

### 116" and 120" (PLUS) Stainless Steel

- Motor 1.5 hp, 3hp or 5hp.
- Durable and trustworthy, perfect for the style of cut and use of the Cutting Band Saw Machine.
- Completely sealed.
- Thermomagnetic protection.
- **Hose Down Washable.**

#### Transmission System

- Traction Band.

#### Security characteristics

- Upper and Lower Pulley completely sealed, interlock switches.
- Security adjustable.
- Protective Guard.

#### Automatic Tension

- Easy use, more productive.
- Always get the right and constant tension.
- Simple click does the trick.
- Automatically adjusts band with Pulleys and Guides.

#### Control System

- Easy Use.
- Start and Stop Buttons.
- Robust Design made in Stainless Steel, contact with food made of Stainless Steel.

#### Details

- Motor: 1.5hp single phase, with option of 3hp and 5 hp three phase.
- 127 or 220v.
- Interrupter with emergency stop.
- Band Saw 116"/ 120".
- Cutting capacity (13 7/8" width, 17" height, 21" long).
- Weight 400 pounds.
- Band velocity 16 mts/ second.
- Completely made of Stainless Steel.

SIE295AI-



#### Pulley Design

- Durable and reliable.
- Tinned Steel.
- Correctly Balanced.
- Angle in Pulley gets Band in correct position.

#### Sliding Table

- 16.75" width X 20.5" long, Stainless Steel.
- Plastic injected wheels

#### Gauge Plate

- 7" x 16.5" Stainless Steel.
- Adjustable cutting size.
- Stackable design.

#### Table Assembly base

- 17.75" x 37" Stainless Steel.
- Thickness makes for resistant surface.
- Enough space to stack product.

#### Difference between 116 and 120"

- Height of the neck, everything else is the same.

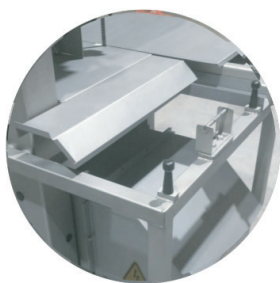
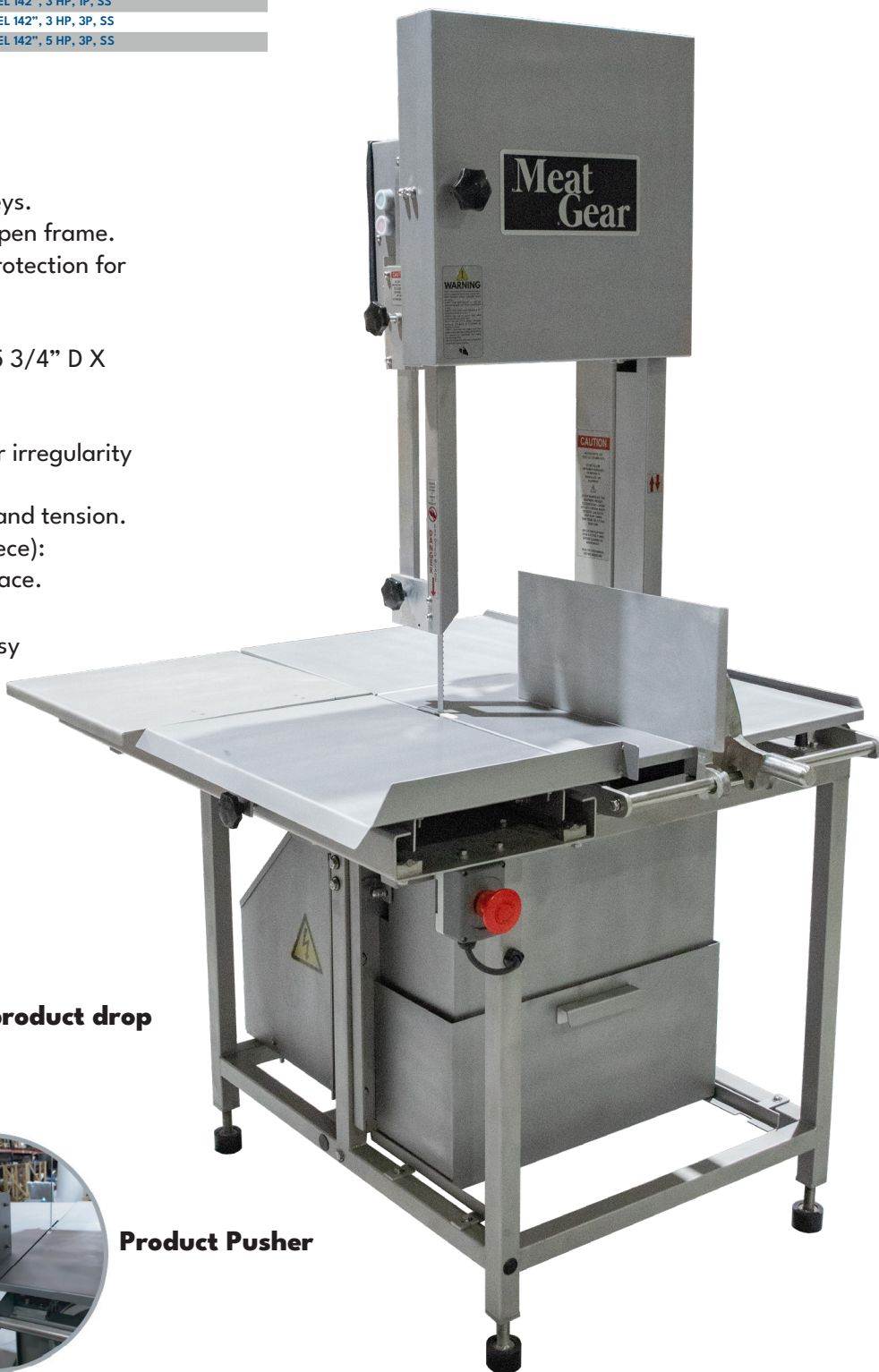
## MEAT CUTTING BAND SAW MACHINE 142" MODEL

ID	DESCRIPTION
SIE360AIHER3HP1P	MEAT CUTTING BAND SAW MACHINE MODEL 142", 3 HP, 1P, SS
SIE360AIHER3HP3P	MEAT CUTTING BAND SAW MACHINE MODEL 142", 3 HP, 3P, SS
SIE360AIHER5HP3P	MEAT CUTTING BAND SAW MACHINE MODEL 142", 5 HP, 3P, SS

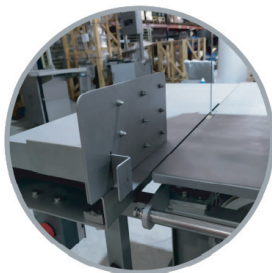
### 142" STAINLESS STEEL

- 3hp or 5hp motor.
- Totally enclosed.
- Removable double flanged pulleys.
- Exclusive two-piece table and open frame.
- Magnetic switch with thermal protection for voltage overloads.
- Saw blade 142" long.
- Capacity: cutting clearance is 15 3/4" D X 17 1/2" H X 24" L.
- Weight: 566.5 LB.
- Adjustable legs to adapt to floor irregularity
- Removable scrap tray
- Automatic tension, easy to use and tension.
- Stationary cutting table (two piece):
  - Provides extensive stacking space.
- Safety interlocked doors,
- Hinged and removable door, easy to clean up and maintenance.

Completely Hose- Down washable



Ramp for product drop



Product Pusher

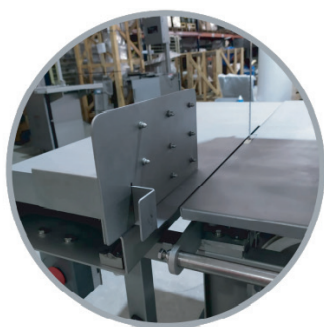
## MEAT CUTTING BAND SAW MACHINE 126" MODEL

ID	DESCRIPTION
SIE320AIHER5HP3P	MEAT CUTTING BAND SAW MACHINE MODEL 126", 5 HP, 3P, SS
SIE320AIHER3HP3P	MEAT CUTTING BAND SAW MACHINE MODEL 126", 3 HP, 3P, SS
SIE320AIHER3HP1P	MEAT CUTTING BAND SAW MACHINE MODEL 126", 3 HP, 1P, SS

### 126" STAINLESS STEEL

- Three phase 5hp.
- 3 Hp or 5hp motor (line), optional 1.5 HP and 3 HP.
- Hose washable.
- ON-OFF Switch, with Emergency Stop.
- Blade tension control accessible and automatic.
- Cutting Band Saw 126".
- Cutting capacity 13 ¾" width X 20" height X 20 ½" length.
- Speed 16 mts./sec.
- Adjustable legs to adapt to floor irregularity.
- Removable scrap tray.
- Automatic tension, easy to adjust by hand.
- Stationary cutting table (two piece): Provides extensive stacking space.
- Safety interlocked doors,
- Hinged and removable door, easy to clean up and maintenance.

Completely Hose- Down washable



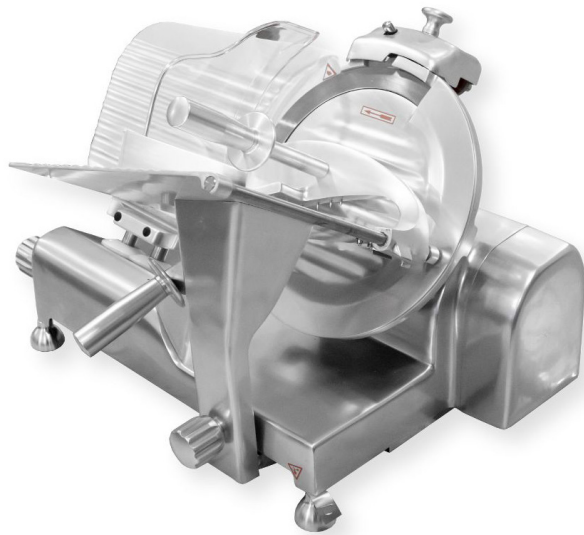
**Product Pusher**

MEAT SLICER

ID	DESCRIPTION
SLICER12G	MEAT SLICER 12" KNIFE DIAMETER GEAR TRANSMISION 1/3 HP
SLICER13G	MEAT SLICER 13" KNIFE DIAMETER GEAR TRANSMISION 1/2 HP

MEAT SLICER

- Material: Anodized aluminum.
- 300mm chrome steel blade.
- Gear transmission.
- Blade speed: 430 RPM. 1/3 HP motor for faster and more accurate cuts.
- Features a cutting width adjuster, reducing waste.
- The equipment includes a sharpener designed to sharpen the blade without disassembly.



MEAT SLICER

ID	DESCRIPTION
SLICER12B	COMERCIAL SLICER 12" KNIFE DIAMETER 1/4 HP

- Material: Anodized aluminum.
- 300 mm chrome steel blade.
- Band transmission.
- Blade speed: 430 RPM. 1/3 HP motor for faster and more accurate cuts.
- Features a cutting width adjuster, reducing waste.
- The equipment includes a sharpener designed to sharpen the blade without disassembly.



AUTOMATIC TABLETOP MEAT SLICER

ID	DESCRIPTION
SLICER12A	AUTOMATIC MEAT SLICER 12" KNIFE DIAMETER GEAR TRANSMISION 3/4 HP
SLICER13A	AUTOMATIC MEAT SLICER 13" KNIFE DIAMETER GEAR TRANSMISION 3/4 HP

AUTOMATIC TABLETOP MEAT SLICER

- Material: Anodized aluminum.
- 300mm chrome steel blade.
- Slice Thickness 0 to 11 mm.
- 250 Watt (1/3hp) Motor.
- 120 volt carriage.
- 60 cycles.
- Cutting speed: 37 to 40 slices per minute.
- Weight 62 kg.
- Dimensions 60 × 60 × 75 cm.

AUTOMATIC TABLETOP MEAT SLICER

- Material: Anodized aluminum.
- 320mm chrome steel blade.
- Slice Thickness 0 to 11 mm.
- 250 Watt (1/3hp) Motor.
- 120 volt carriage.
- 60 cycles.
- Cutting speed: 37 to 40 slices per minute.
- Weight 62 kg.
- Dimensions 60 × 60 × 75 cm.





## AUTOMATIC MEAT SLICER

ID	DESCRIPTION
SLICER14AS	AUTOMATIC MEAT SLICER 14" KNIFE DIAMETER GEAR TRANSMISION 2 X 1 HP (STAND)

### AUTOMATIC MEAT SLICER

- Cuts frozen meat between -4° and 7°c.
- Material: Anodized aluminum.
- Automatic variable speed cutting operation of 45 to 60 cuts per minute.
- Floor cabinet.
- Surgical steel blade 363 mm diameter, slice thickness 0 to 25 mm.
- 2 motors of 750 watts (1 HP each) at 220 volts, 60 cycles.
- 2 phases.

## MEAT GRINDER MODEL 22

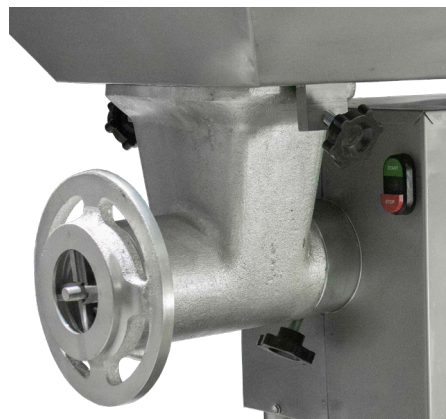
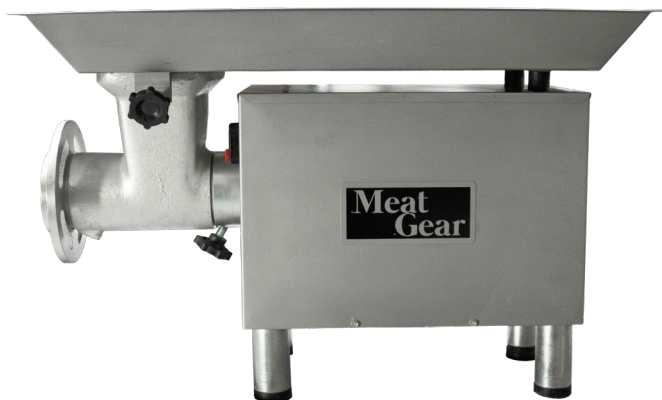
ID	DESCRIPTION
MO22AC2HP1101P	MEAT GRINDER, M22, 110 VOLTS, 2 HP, 1P, CAST IRON
MO22AC2HP2201P	MEAT GRINDER, M22, 220 VOLTS, 2 HP, 1P, CAST IRON
MO22AI2HP1101P	MEAT GRINDER, M22, 110 VOLTS, 2 HP, 1P, STAINLESS STEEL
MO22AI2HP2201P	MEAT GRINDER, M22, 220 VOLTS, 2 HP, 1P, STAINLESS STEEL
MO22AC1HP1101P	MEAT GRINDER, M22, 110 VOLTS, 1 HP, 1P, CAST IRON
MO22AC1HP2201P	MEAT GRINDER, M22, 220 VOLTS, 1 HP, 1P, CAST IRON
MO22AI1HP1101P	MEAT GRINDER, M22, 110 VOLTS, 1 HP, 1P, STAINLESS STEEL
MO22AI1HP2201P	MEAT GRINDER, M22, 220 VOLTS, 1 HP, 1P, STAINLESS STEEL

## MEAT GRINDER MODEL 32

ID	DESCRIPTION
MO32AI3HP2201P	MEAT GRINDER, M32, 220 VOLTS, 3 HP, 1P, STAINLESS STEEL
MO32AI3HP2203P	MEAT GRINDER, M32, 220 VOLTS, 3 HP, 3P, STAINLESS STEEL
MO32AI5HP2203P	MEAT GRINDER, M32, 220 VOLTS, 5 HP, 3P, STAINLESS STEEL
MO32AI3HP2201PE	MEAT GRINDER, M32, 220 VOLTS, 3 HP, 1P, STAINLESS STEEL, INCLUDES PEDESTAL
MO32AI3HP2203PE	MEAT GRINDER, M32, 220 VOLTS, 3 HP, 3P, STAINLESS STEEL, INCLUDES PEDESTAL
MO32AI5HP2203PE	MEAT GRINDER, M32, 220 VOLTS, 5 HP, 3P, STAINLESS STEEL, INCLUDES PEDESTAL
MO32AC3HP2201P	MEAT GRINDER, M32, 220 VOLTS, 3 HP, 1P, CAST IRON
MO32AC3HP2203P	MEAT GRINDER, M32, 220 VOLTS, 3 HP, 3P, CAST IRON
MO32AC5HP2203P	MEAT GRINDER, M32, 220 VOLTS, 5 HP, 3P, CAST IRON
MO32AC3HP2201PE	MEAT GRINDER, M32, 220 VOLTS, 3 HP, 1P, CAST IRON, INCLUDES PEDESTAL
MO32AC3HP2203PE	MEAT GRINDER, M32, 220 VOLTS, 3 HP, 3P, CAST IRON, INCLUDES PEDESTAL
MO32AC5HP2203PE	MEAT GRINDER, M32, 220 VOLTS, 5 HP, 3P, CAST IRON, INCLUDES PEDESTAL

## MEAT GRINDER M22 STAINLESS STEEL OR CAST IRON

- Model 22.
- Stainless Steel Cabinet and Pan.
- Head Stock Ring, Worm and Head Stock
- Stainless Steel or Cast iron.
- 110 or 220 v.
- 30.5"x 16 13/16" x 3" Pan.
- Motor 1hp or 2 hp.
- Up to 1700 pounds per hour.



## MEAT GRINDER M32 STAINLESS STEEL OR CAST IRON

- Model 32.
- Stainless Steel Cabinet and Pan.
- Head Stock Ring, Worm and Head Stock.
- Stainless Steel or Cast Iron.
- 3hp3p= 24 1/4" x 37 5/5" x 3" pan.
- 5hp3p= 19 3/8" x 40 11/16" x 8 1/2" pan.
- 220 volts.
- Single phase or three phase.
- Motor 3 hp or 5hp.
- Up to 3300 pounds per hour.
- With or Without Pedestal.



### MIXER GRINDER M32

ID	DESCRIPTION
MOM32AC75HP2203P	MIXER GRINDER M32, 220V, 7.5HP, 3P, CARBON STEEL
MOM32AC5HP2201P	MIXER GRINDER M32, 220V, 5 HP, 1P, CARBON STEEL
MOM32AI75HP2203P	MIXER GRINDER M32, 220V, 7.5HP, 3P, STAINLESS STEEL
MOM32AI5HP2201P	MIXER GRINDER M32, 220V, 5 HP, 1P, STAINLESS STEEL

## MEAT MIXER GRINDER

- Grind and mix meat with one same equipment.
- Robust stainless steel construction, ideal for high-demand areas such as slaughterhouses, packing houses, supermarkets, and more.
- Motor: 7.5 HP, 220V, three phase, and 5 HP, 220V, Single phase.
- Grinding capacity:
  - First grind: 70 lbs / min. 3/8" Meat Grinder Plate.
  - Second grind: 59 lbs / min. 1/8" Meat Grinder Plate.
- Container capacity: 132 lbs (depending on the type of product).
- The mixer grinder is for use with fresh and frozen boneless meat at a temperature equal to or greater than 24°F. The meat can be in the form of strips or slices.
- Weight: 628 lbs. With packaging: 740 lbs.
- Stainless steel blade manufacturing.
- Manufacturing of grinding unit: Tin-plated cast iron, stainless steel option, size 32 (blade and sieve).
- Hose water washable.
- Four wheels for effortless mobility, with anti-blocking system.
- Easy disassembly of parts for cleaning without using tools.
- Meat diverter.
- Electric foot control (grind only).
- Optional meat container.



# STAINLESS STEEL VACUUM TUMBLER



## VACCUM TUMBLER

ID	DESCRIPTION
VACTUM60	VACCUM TUMBLER CAP 35/50 LTS, 60 POUNDS, 127/220V
VACTUM155	VACCUM TUMBLER CAP 70/120 LTS, 155 POUNDS 127/220V
VACTUM400	VACCUM TUMBLER CAP 180/300 LTS, 400 POUNDS 127/220V

High-performance equipment that enables your products to achieve a weight increase of up to 20% at the end of the process. The vacuum allows the product's tissue to expand, ensuring the marinade penetrates, providing tenderness and enhanced flavor.

## STAINLESS STEEL VACUUM TUMBLER

- Structure manufactured in PTR with a stainless steel drumStainless Steel.
- Electrical and mechanical safety system (standby electrical system).
- Micro switch in the vacuum hose to prevent accidental marination activation.
- Marination process time control with an alarm at the end of the process.
- Movable wheels with brakes for transportation.
- Product unloading cart for models 120 and 300.
- Product collection tray for model 50.
- Rotation push button for automatic unloading.
- Rotation change for aggressive or delicate massage processes in models 120 and 300.
- Chain transmission for models 120 and 300.
- Belt transmission for model 50.
- Vacuum system with filter and liquid trap.
- Drain valve.

# MEAT MIXER

NEW!

MEAT EQUIPMENT

## MEAT MIXER

ID	DESCRIPTION
MEMIX220	MIXER CAP 220 POUNDS 127/220V
MEMIX440	MIXER CAP 440 POUNDS 127/220V

## MEAT MIXER

- Manufacturing of a structure in PTR with a stainless steel tumbler.
- Removable paddles for easy cleaning.
- Electrical and mechanical safety system, control panel protected against impacts.
- Mixing process time control with an alarm at the end of the process.
- Movable wheels with brakes for transportation.
- Cart for product unloading.
- Chain transmission.
- Position adjustment with mechanical anchoring for unloading.
- Drain valve.



## PRODUCTS THAT CAN BE PROCESSED

- Dough for bread and tortillas.
- Meat products.
- Pasta.
- Chemical products.



## INDUSTRIAL FILM WRAPPERS

ID	DESCRIPTION
EMP18IM	INDUSTRIAL FILM WRAPPER 8" AND 18" ROLL, HEAT SEALER
EMP18IP	INDUSTRIAL FILM WRAPPER 8" AND 18" ROLL, HEAT SEALER WITH TABLE

### EMP18IP INDUSTRIAL FILM WRAPPER WITH TABLE

- Easy to control the film wrap adjustment to avoid waste and reduce cost.
- Allows two sizes of film wrap working simultaneously
- Safe to operate with its light indicator to prevent accidents
- Provides bigger space to operate in with efficiency
- Constructed in stainless steel/aluminium

#### Additional available accessories

- Left table BEPMI
- Right table BEPMD
- Labeling Scale BIE-30C



### EMP18IM INDUSTRIAL FILM WRAPPER

- Easy to control the film wrap adjustment to avoid waste and reduce cost.
- Portable with hot sealing plate and controlled roll adjustment.
- Constructed in stainless steel/aluminium.
- It's light indicator allows to know when its operating preventing accidents.





## SAUSAGE STUFFER MANUAL MODEL

ID	DESCRIPTION
SAMIXM3	SAUSAGE STUFFER MANUAL MODEL 3 LTS
SAMIXM5	SAUSAGE MIXER MANUAL MODEL 5 LTS
SAMIXM7	SAUSAGE MIXER MANUAL MODEL 7 LTS

## SAUSAGE STUFFER ELECTRIC MODEL

ID	DESCRIPTION
SAMIXELE10	SAUSAGE MIXER ELECTRIC MODEL 10 LTS
SAMIXELE15	SAUSAGE MIXER ELECTRIC MODEL 15 LTS

## SAUSAGE MIXER MANUAL

- Manufactured in Stainless Steel, vertical design.
- Includes 4 funnels 0.60", 0.86", 1.20", 1.50".
- It's engine system is made of gears, has capacity of 3, 5, 7 liters.

## SAUSAGE MIXER ELECTRIC

- Manufactured in Stainless Steel, vertical design.
- Includes 4 funnels 0.60", 0.86", 1.20", 1.50".
- It's engine system is made of gears, has capacity of 10 and 15 liters.
- Voltage 110V.





POULTRY CUTTER

ID	DESCRIPTION
COP20AI34HP110V	POULTRY CUTTER 3/4HP STAINLESS STEEL 110V
COP20AI34HP220V	POULTRY CUTTER 3/4HP STAINLESS STEEL 220V

POULTRY CUTTER

- Long lasting chrome steel blade.
- Precise cuts with a Stainless steel knife guide.
- Easy to clean.
- Easy to operate.
- Sturdy construction.
- Less maintainance.
- High efficiency.
- Rubber legs



POULTRY CUTTER

ID	COP20AI34HP110V	COP20AI34HP220V
Motor	3/4HP 373 WATTS	3/4HP 373 WATTS
Voltage	110 V	220 V
Electric power	7.2 Amp	4.1 Amp

## MEAT GRINDER PLATE

ID	DESCRIPTION
BCD12P12	MEAT GRINDER PLATE #12, PERFORATED, 1/2", STAINLESS STEEL
BCD12P14	MEAT GRINDER PLATE #12, PERFORATED, 1/4", STAINLESS STEEL
BCD12P18	MEAT GRINDER PLATE #12, PERFORATED, 1/8", STAINLESS STEEL
BCD12P316	MEAT GRINDER PLATE #12, PERFORATED, 3/16", STAINLESS STEEL
BCD12P34	MEAT GRINDER PLATE #12, PERFORATED, 3/4", STAINLESS STEEL
BCD12P38	MEAT GRINDER PLATE #12, PERFORATED, 3/8", STAINLESS STEEL
BCD12P58	MEAT GRINDER PLATE #12, PERFORATED, 5/8", STAINLESS STEEL
BCD22P12	MEAT GRINDER PLATE #22, PERFORATED, 1/2", STAINLESS STEEL
BCD22P14	MEAT GRINDER PLATE #22, PERFORATED, 1/4", STAINLESS STEEL
BCD22P18	MEAT GRINDER PLATE #22, PERFORATED, 1/8", STAINLESS STEEL
BCD22P316	MEAT GRINDER PLATE #22, PERFORATED, 3/16", STAINLESS STEEL
BCD22P34	MEAT GRINDER PLATE #22, PERFORATED, 3/4", STAINLESS STEEL
BCD22P38	MEAT GRINDER PLATE #22, PERFORATED, 3/8", STAINLESS STEEL
BCD22P58	MEAT GRINDER PLATE #22, PERFORATED, 5/8", STAINLESS STEEL
BCD22PK3	MEAT GRINDER 22 LIVER (3) " STAINLESS STEEL
BCD32P1	MEAT GRINDER PLATE #32, PERFORATED, 1", STAINLESS STEEL
BCD32P12	MEAT GRINDER PLATE #32, PERFORATED, 1/2", STAINLESS STEEL
BCD32P14	MEAT GRINDER PLATE #32, PERFORATED, 1/4", STAINLESS STEEL
BCD32P18	MEAT GRINDER PLATE #32, PERFORATED, 1/8", STAINLESS STEEL
BCD32P316	MEAT GRINDER PLATE #32, PERFORATED, 3/16", STAINLESS STEEL
BCD32P34	MEAT GRINDER PLATE #32, PERFORATED, 3/4", STAINLESS STEEL
BCD32P38	MEAT GRINDER PLATE #32, PERFORATED, 3/8", STAINLESS STEEL
BCD32P58	MEAT GRINDER PLATE #32, PERFORATED, 5/8", STAINLESS STEEL



	Thickness	Perforations
G r i n d e r  S i z e	12	8mm 1/8, 3/16, 1/4, 3/8, 1/2, 5/8, 3/4
	22	9mm 1/8, 3/16, 1/4, 3/8, 1/2, 5/8, 3/4, K
	32	12mm 1/8, 3/16, 1/4, 3/8, 1/2, 5/8, 3/4, 1



ITALIAN STYLE GRINDER KNIFE



GRINDER KNIFE



GRINDER STRAIGHT KNIFE

	Knives
G r i n d e r  S i z e	12 Italian style Grinder knife Grinder straight knife
	22 Italian style Grinder knife Grinder straight knife
	32 Grinder knife Grinder straight knife

## KNIVES

ID	DESCRIPTION
BNII2	ITALIAN STYLE GRINDER KNIFE #12, STAINLESS STEEL
BNI22	ITALIAN STYLE GRINDER KNIFE #22, STAINLESS STEEL
BNLV12	GRINDER KNIFE #12, STAINLESS STEEL
BNLV22	GRINDER KNIFE #22, STAINLESS STEEL
BNLV32	GRINDER KNIFE #32, STAINLESS STEEL
BNIR12	GRINDER STRAIGHT KNIFE #12, STAINLESS STEEL
BNIR22	GRINDER STRAIGHT KNIFE #22, STAINLESS STEEL
BNIR32	GRINDER STRAIGHT KNIFE #32, STAINLESS STEEL

## Cutting Band Saws

- Less waste.
- Better Cuts.
- High Quality.

### CUTTING BAND SAWS

ID	DESCRIPTION
BCB322L1	CUTTING BAND SAWS FROM 322-50" TO 322-116"
BCB322L2	CUTTING BAND SAWS FROM 322-117" TO 322-128"
BCB322L3	CUTTING BAND SAWS FROM 322-129" TO 322-150"

### CUTTING BAND SAWS

ID	DESCRIPTION
BCB325L1	CUTTING BAND SAWS FROM 325-50" TO 325-116"
BCB325L2	CUTTING BAND SAWS FROM 325-117" TO 325-128"
BCB325L3	CUTTING BAND SAWS FROM 325-129" TO 325-150"

### CUTTING BAND SAWS

ID	DESCRIPTION
BCB422L1	CUTTING BAND SAWS FROM 422-50" TO 422-116"
BCB422L2	CUTTING BAND SAWS FROM 422-117" TO 422-128"
BCB422L3	CUTTING BAND SAWS FROM 422-129" TO 422-150"

### CUTTING BAND SAWS

ID	DESCRIPTION
BCB425L1	CUTTING BAND SAWS FROM 425-50" TO 425-116"
BCB425L2	CUTTING BAND SAWS FROM 425-117" TO 425-128"
BCB425L3	CUTTING BAND SAWS FROM 425-129" TO 425-150"

### GENERAL FEATURES

THICKNESS	22 THOUSANDTHS	25 THOUSANDTHS
# TEETH PER INCH (TPI)	3 & 4 TEETH	
WIDTH	5/8 INCH (1.6 CM)	
SIZE	ANY REQUIRED	
CUT FEATURES	HIGH CUT DEMAND, LOW WASTE, HIGHLY RESISTANT, COMPETITIVE PRICE.	

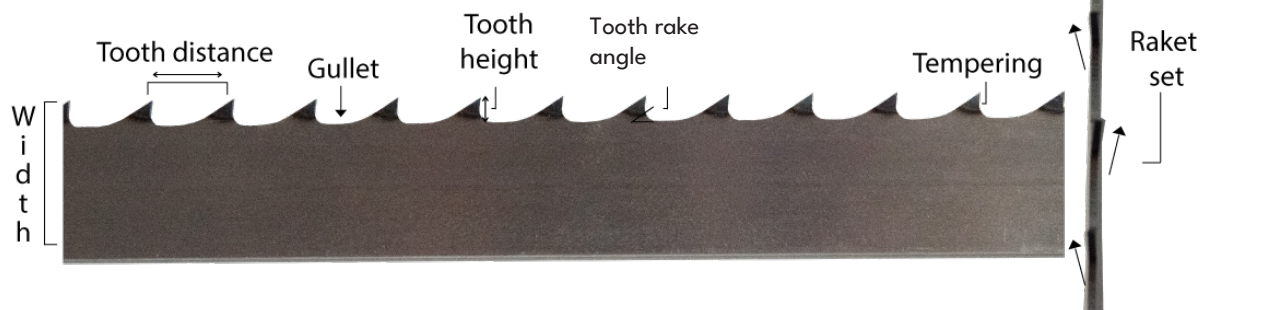


### Nomenclature

116"-322 ← Gauge

Band size

Teeth per inch (TPI)





**MEAT CUTTING BAND SAW MACHINE 142**  
**WWW.MEATGEAR.MX**

# <sup>M</sup>Meat <sup>G</sup>Gear



MEATGEAR.MX



(800) 824-1644/(832) 675-9699



SALES@CONCASSEUSA.COM



10215 S SAM HOUSTON PARKWAY W,  
SUITE 150, MISSOURI CITY, TEXAS, 77489